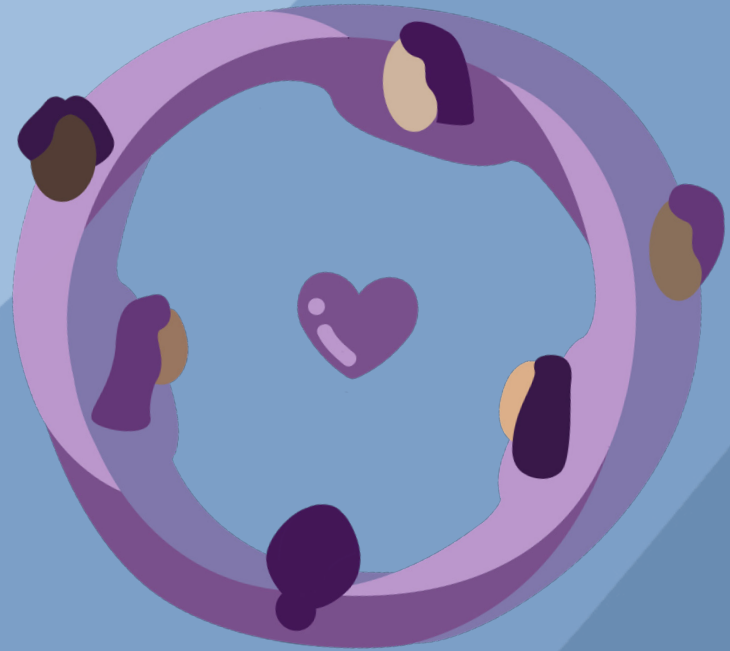


# THE SHAWNA PROJECT WANTS TO CONNECT WITH YOU!

**If you're a cis or trans woman living with HIV, we want to connect with you!**

- **Share** your priorities and give guidance on key issues, topics & questions
- **Participate** in surveys every 6 months (\$65 honorarium for each visit)
- **Engage** in working groups, expert consultations and peer-led sharing circles (honoraria varies)

**Interested? Get in touch to see if you are eligible!**



## Who are we?

- The SHAWNA Project is a community-based long-term study with women living with HIV in Metro Vancouver. We are currently recruiting!
- Our study aims to understand how to increase access to health care services, with a focus on increasing support and safety and reducing stigma and other harms.

## Questions?

Find us at 647 E. Hastings St  
Email [shawna@cgshe.ubc.ca](mailto:shawna@cgshe.ubc.ca)  
Call our outreach phones  
604.761.9387 / 604.761.8531  
Or call our front desk  
604.822.0048



SHAWNA Project  
604.761.9387  
604.655.8531

SHAWNA Project  
604.761.9387  
604.655.8531

SHAWNA Project  
604.761.9387  
604.655.8531

SHAWNA Project  
604.761.9387  
604.655.8531

SHAWNA Project  
604.761.9387  
604.655.8531

SHAWNA Project  
604.761.9387  
604.655.8531

SHAWNA Project  
604.761.9387  
604.655.8531

SHAWNA Project  
604.761.9387  
604.655.8531